

INTERNI

THE MAGAZINE OF INTERIORS
AND CONTEMPORARY DESIGN

N°2 JANUARY-FEBRUARY

GENNAIO-FEBBRAIO 2022

MONTHLY ITALY/MENSILE ITALIA € 10

DISTRIBUTION 18 JANUARY/GENNAIO 2022

AT € 19,50 - BE € 18,50 - CH CHF 19,80 - DE € 23,50

DK kr 165 - E € 17 - F € 18 - MC Côte D'Azur € 18,10

PT € 17 - SE kr 170 - US \$ 30

Poste Italiane SpA - Sped. in A.P.D.L. 353/03

art.1, comma1, DCB Verona

GRUPPO  MONDADORI

WARMING
DESIGN

INTERNATIONAL
ENGLISH ISSUE

22202 >



9 771122 365100



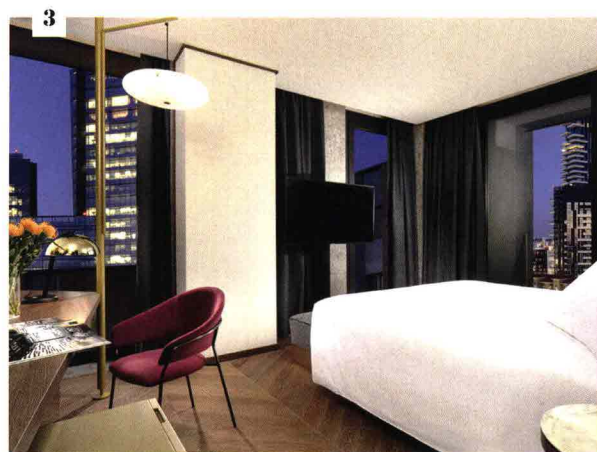
MILAN IN THE CENTER

With a cultured tribute to the genius loci, **Milano Verticale**, Gruppo UNA's new four-star superior hotel, designed by **Vudafieri Saverino Partners** in the internal and external spaces, is presented as a place of hospitality open to the city

In keeping with the concept shared with the Asti Architetti studio, which designed the building's architectural renewal, Milano Verticale, the Gruppo UNA's new four-star superior hotel, designed by Vudafieri Saverino Partners in the internal and external spaces, starts from its privileged position between Via De Cristoforis and Via Rosales, in the Porta Nuova district.

Business, design, finance, fashion, food & beverage, everything is concentrated in this area. And out of this rich soil grew the idea of the designers to reflect on the renewed sense of inhabiting urban time and space, making the hotel a new device for meeting and socializing, a precise pole of reference. It is much more than a place of welcome that finds its form and meaning in the 173 rooms laid out on 12 floors, the approximately 600 square meters of catering spaces with the threefold proposal signed by Michele Cobuzzi, chef of the Enrico Bartolini team, and over 1000 square meters of internal garden. "At the center of the project is the city, reinterpreted in the numerous material details of the tradition of 'Milanese' design that pays homage to the timeless modernity of the post-war masters, especially Gio Ponti, such as the use of polychrome marble and Lombard ceppo stone,"

1. A BELVEDERE TERRACE WITH LOW TABLES AND SOFAS FROM THE SYNTHESIS COLLECTION BY **UNOPIÙ**
2. THE AMENITIES ON THE GROUND FLOOR PLAY AN ACTIVE ROLE IN THE DIALOGUE WITH THE URBAN STAGE, INTROJECTED THROUGH THE BUILDING'S PERMEABLE AND EXTROVERTED SKIN
3. A PRIVATE ROOM, THE **SIMMONS** BED, JAZZ 3716 ARMCHAIR BY **PEDRALI**, LUNA SUSPENSION LAMP BY **TATO**, CLOCHE TABLE LAMP BY **HAY** AND THE SPECIALLY DESIGNED DESK



explain Tiziano Vudafieri and Claudio Saverino. "It is a tribute to the worldwide homeland of beautiful design brilliantly fulfilled by Concreta, an interior contractor company from Postalesio, in Valtellina, which played a key role in its realization." In the communal areas, the narrative relies on



1. THE DOUBLE-HEIGHT SPACE OF THE HALL, RECEPTION AND LOBBY, FEATURING BRAZILIAN MARBLE WALLS AND THE STONEWARE FLOORING. **TACCHINI** SOFA AND COFFEE TABLE, **LA CIVIDINA** POUF AND **VIABIZZUNO** GLASS SUSPENSION LAMPS. AT LEFT, DESIGNER TABLE AND SHE SAID CHAIRS BY **MATTIAZZI**. THE PROJECT WAS CARRIED OUT BY THE INTERIOR CONTRACTOR **CONCRETA**. **2.** THE LOUNGE. STANDARD SOFA BY **EDRA**, CINQUANTA ARMCHAIR BY **MUSSI**, CAGE COFFEE TABLE BY **TACCHINI**, MARIETTA PENDANT LAMPS BY **BOVER**. **3.** VIEW OF THE INNER GARDEN CONCEIVED AS A HIDDEN OASIS OF PEACE AND RELAXATION TO BE EXPERIENCED AT ANY TIME OF DAY



the spectacular quality of the marble walls and ceilings with different fields of color that also frame the large double-height space, the prelude to the inner garden, a hidden oasis of peace

and relaxation, to be experienced at any time of day. The space then contracts and dilates beneath the large ceiling with sloping tiles that makes the three rooms dedicated to catering fluid and also distinctive in mood: one open, overlooking the kitchen and projected towards the outdoors and the garden, the other two more intimate and fine dining, with private rooms with seating for six and eight. The channel of water with polished stone edges that flows the length of the garden longitudinally defines the informal space of the 'déjeuner sur l'herbe', where nature, laid out by the designers together with P'Arcnouveau, is expressed amid groups of shrubs, grasses and herbaceous species, with contrasting

materials and finishes, such as the dark shale end wall and metal gabions filled with large pebbles to set off the softness of the turf. The same twist that distinguishes the communal areas is then found in the guests' rooms. Here, between floors laid in ceppo stone and dark oak boards, marble walls and the headboard of the beds in walnut, the brass desk/console made to design becomes a constant feature in the settings, their potential enhanced by the furnishings. Not to forget the showpiece of the structure, the rooftop of 530 square meters on the thirteenth floor, belonging to the four Penthouse Suites: four exclusive super penthouses with large panoramic terraces fitted with jacuzzi pools and an unparalleled view of the Milan skyline and the Alps ■ Antonella Boisi, photo Santi Caleca / courtesy Milano Verticale UNA Esperienze

